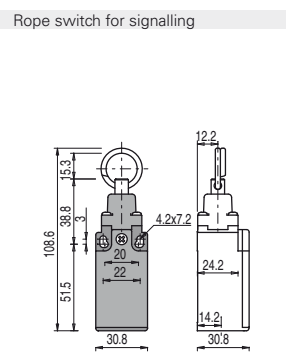
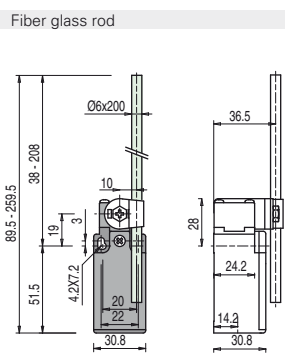
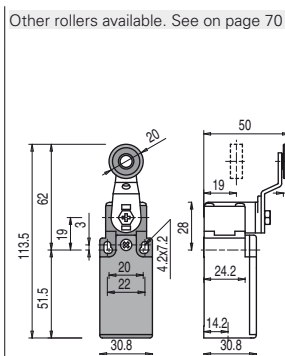


# Position switches FR series

- Contact type:
- R** = snap action
  - L** = slow action
  - LO** = slow action overlapped
  - LS** = slow action shifted
  - LV** = slow action shifted and spaced
  - LI** = slow action independent
  - LA** = slow action closer
  - ⏏** = electronic PNP

Contact blocks



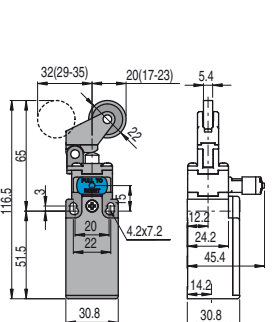
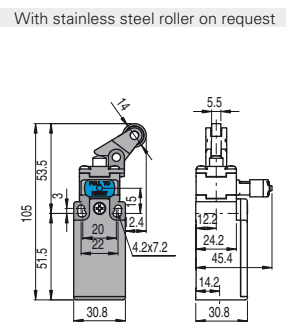
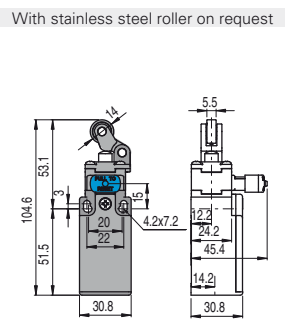
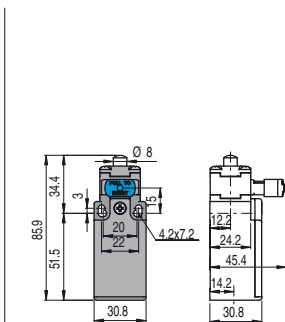
5	<b>R</b>	FR 557-M2	1NO+1NC	FR 569-M2	1NO+1NC	FR 576-M2	1NO+1NC
6	<b>L</b>	FR 657-M2	1NO+1NC	FR 669-M2	1NO+1NC	FR 676-M2	1NO+1NC
7	<b>LO</b>	FR 757-M2	1NO+1NC	FR 769-M2	1NO+1NC	FR 776-M2	1NO+1NC
9	<b>L</b>	FR 957-M2	2NC	FR 969-M2	2NC	FR 976-M2	2NO
10	<b>L</b>	FR 1057-M2	2NO	FR 1069-M2	2NO	FR 1076-M2	2NC
11	<b>R</b>	FR 1157-M2	2NC	FR 1169-M2	2NC	FR 1176-M2	2NO
12	<b>R</b>	FR 1257-M2	2NO	FR 1269-M2	2NO	FR 1276-M2	2NC
13	<b>LV</b>	FR 1357-M2	2NC	FR 1369-M2	2NC	FR 1376-M2	2NO
14	<b>LS</b>	FR 1457-M2	2NC	FR 1469-M2	2NC	FR 1476-M2	2NO
15	<b>LS</b>	FR 1557-M2	2NO	FR 1569-M2	2NO	FR 1576-M2	2NC
16	<b>LI</b>	FR 1657-M2	2NC	FR 1669-M2	2NC		
18	<b>LA</b>	FR 1857-M2	1NO+1NC	FR 1869-M2	1NO+1NC	FR 1876-M2	1NO+1NC
20	<b>L</b>	FR 2057-M2	1NO+2NC	FR 2069-M2	1NO+2NC	FR 2076-M2	2NO+1NC
21	<b>L</b>	FR 2157-M2	3NC	FR 2169-M2	3NC	FR 2176-M2	3NO
22	<b>L</b>	FR 2257-M2	2NO+1NC	FR 2269-M2	2NO+1NC	FR 2276-M2	1NO+2NC
2	<b>R</b>	FR 257-M2	2x(1NO-1NC)	FR 269-M2	2x(1NO-1NC)	FR 276-M2	2x(1NO-1NC)
E1	<b>⏏</b>	FR E157-M2	1NO-1NC	FR E169-M2	1NO-1NC		
Max. speed		page 239 - type 1		1.5 m/s		0.5 m/s	
Min. force		0.06 Nm (0.25 Nm $\rightarrow$ )		0.06 Nm		initial 20 N - final 40 N	
Travel diagrams		page 240 - group 5		page 240 - group 5		page 240 - group 7	

## Position switches FR series with reset



Pizzato Elettrica has developed a reset device code W3 to make perfectly simultaneous the actuator and the contact block tripping. The device is a block inserted between the switch body and the head, and could be rotated independently from this last one. This new device has following advantages:

- The reset device can be integrated into almost all standard actuator heads
- Contact blocks with snap action are no more necessary because the tripping movement is made by the reset device itself
- The reset device can be rotated independently from the head for maximum flexibility during installation
- Two driving forces: standard and increased for applications with vibrations
- Mechanical endurance: 1 million operating cycles.



Contact blocks

6	<b>L</b>	FR 601-W3M2	1NO+1NC	FR 602-W3M2	1NO+1NC	FR 605-W3M2	1NO+1NC	FR 607-W3M2	1NO+1NC
9	<b>L</b>	FR 901-W3M2	2NC	FR 902-W3M2	2NC	FR 905-W3M2	2NC	FR 907-W3M2	2NC
10	<b>L</b>	FR 1001-W3M2	2NO	FR 1002-W3M2	2NO	FR 1005-W3M2	2NO	FR 1007-W3M2	2NO
20	<b>L</b>	FR 2001-W3M2	1NO+2NC	FR 2002-W3M2	1NO+2NC	FR 2005-W3M2	1NO+2NC	FR 2007-W3M2	1NO+2NC
21	<b>L</b>	FR 2101-W3M2	3NC	FR 2102-W3M2	3NC	FR 2105-W3M2	3NC	FR 2107-W3M2	3NC
22	<b>L</b>	FR 2201-W3M2	2NO+1NC	FR 2202-W3M2	2NO+1NC	FR 2205-W3M2	2NO+1NC	FR 2207-W3M2	2NO+1NC
2	<b>R</b>	FR 201-W3M2	2NO+2NC	FR 202-W3M2	2NO+2NC	FR 205-W3M2	2NO+2NC	FR 207-W3M2	2NO+2NC
Max. speed		page 239 - type 4		page 239 - type 3		page 239 - type 3		page 239 - type 3	
Min. force		4.5 N (25 N $\rightarrow$ )		4 N (25 N $\rightarrow$ )		4 N (25 N $\rightarrow$ )		2.5 N (25 N $\rightarrow$ )	
Travel diagrams		page 241 - group 1		page 241 - group 2		page 241 - group 2		page 241 - group 3	

All measures in the drawings are in mm

Items with code on **green** background are stock items

Accessories See page 225